

StrongHandTools

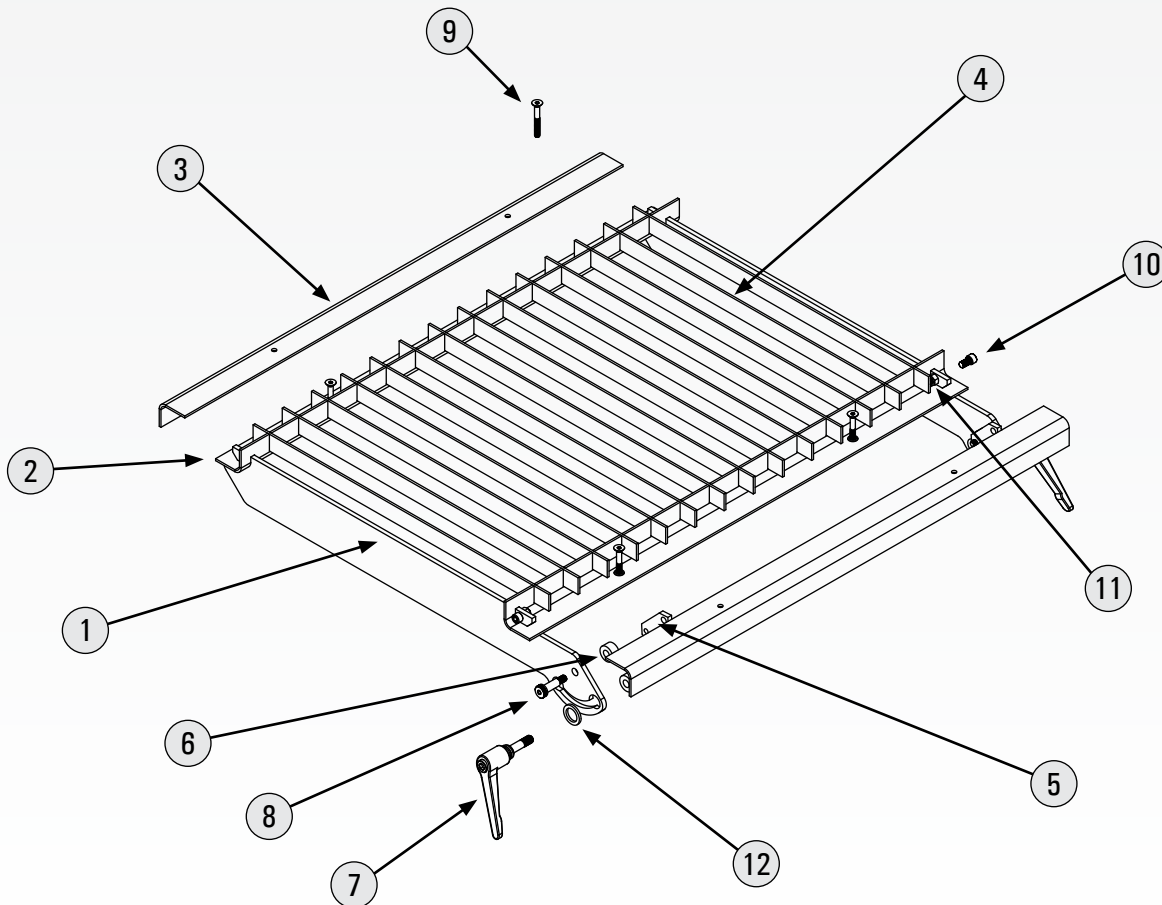
RHINO CART
MOBILE FIXTURING STATION

PLASMA CUTTING TRAY

INSTRUCTION MANUAL



PART NO.: TPL3021



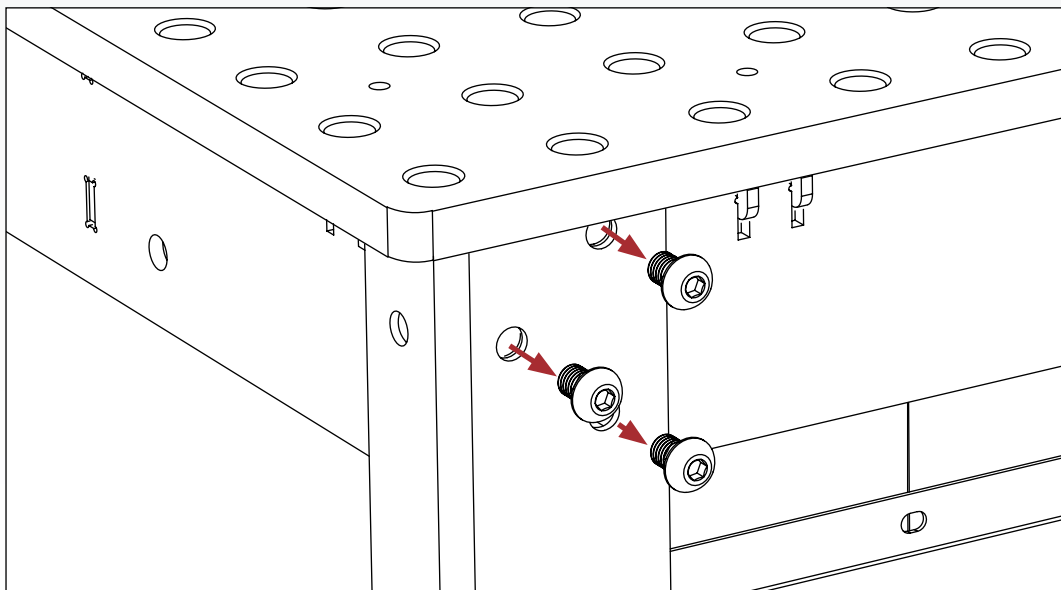
Part #	Name	Qty.
1	Pivoting Support Arm	2
2	Bottom Angle Bracket	2
3	Top Angle Bracket	2
4	Plasma Cutting Slat	14
5	Threaded Backplate	2
6	Spacer, Ø20	4
7	Adjustable Handle	2
8	Shoulder Screw, M8	2
9	Flat Screw, M6 x 40	4
10	Socket Head Screw, M8 x 16	4
11	Nut, M8	4
12	Washer, Ø14	2

ASSEMBLY INSTRUCTION

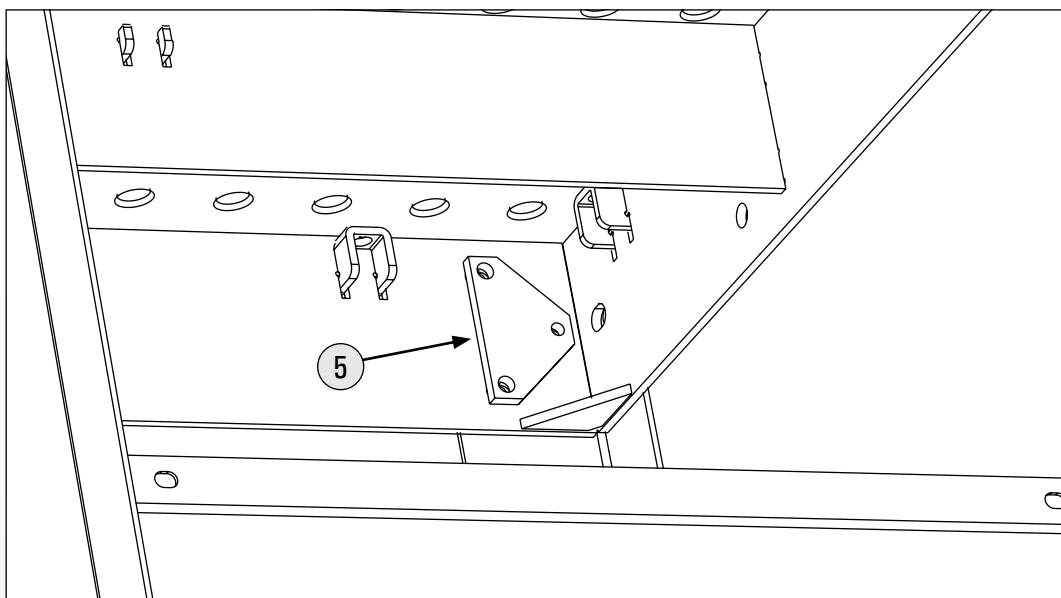
PART NO.: TPL3021



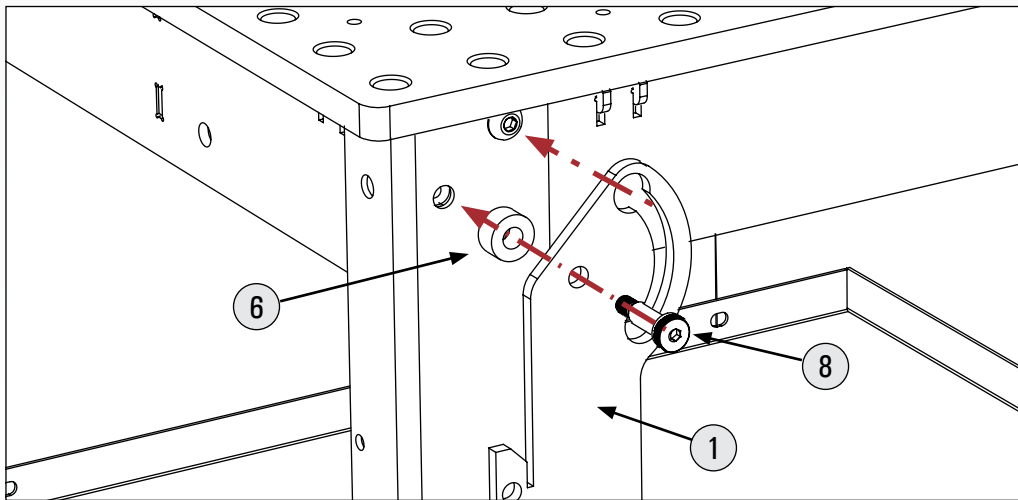
1. Unscrew the three M10 screws located on the Rhino Cart frame shown in the image.



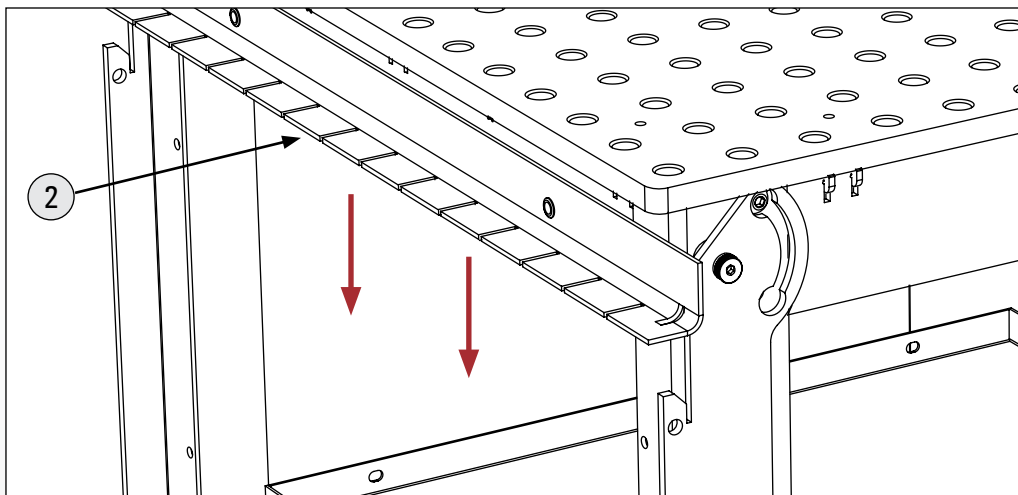
2. Take the Threaded Backplate (Part#: 5) and locate it on the inside of the Rhino Cart frame as shown.



3. Take one of the original M10 screws removed in step 1 and screw it back in through the top hole.
4. Align the pivoting support arm (Part#: 1) vertically. Pass the shoulder screw (Part#: 8) through the support arm, the spacer (Part#: 6) and the front hole of the Rhino Cart frame. Screw it into the backplate.



5. Repeat steps 1-4 for the opposite side.
6. Slide the bottom angle bracket (Part#: 2) into the tabs on both of the support arms.

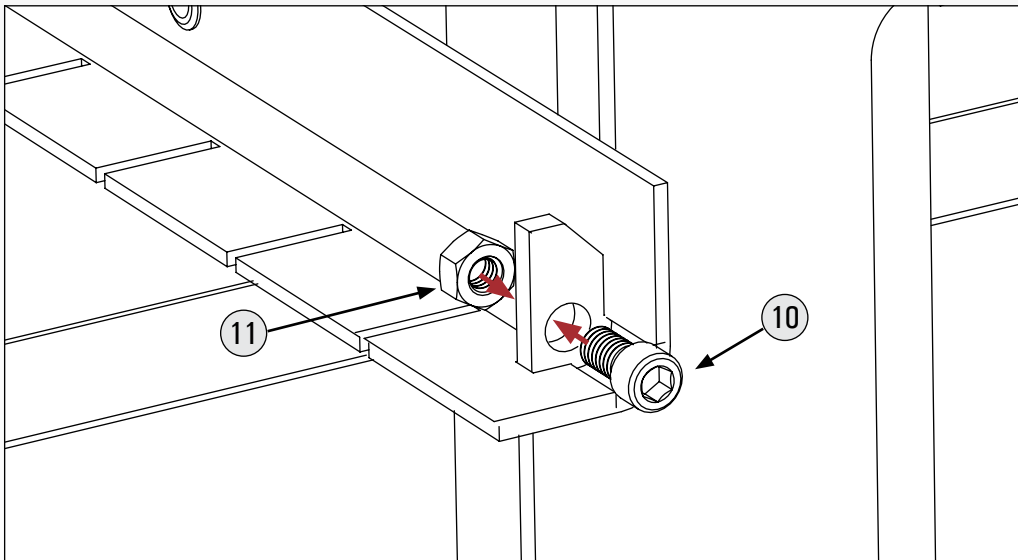


ASSEMBLY INSTRUCTION

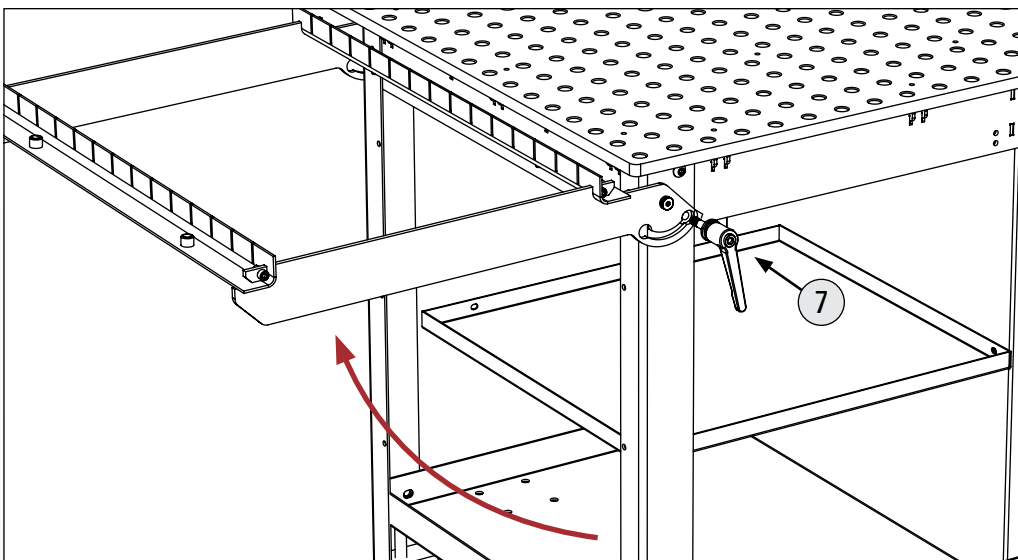
PART NO.: TPL3021



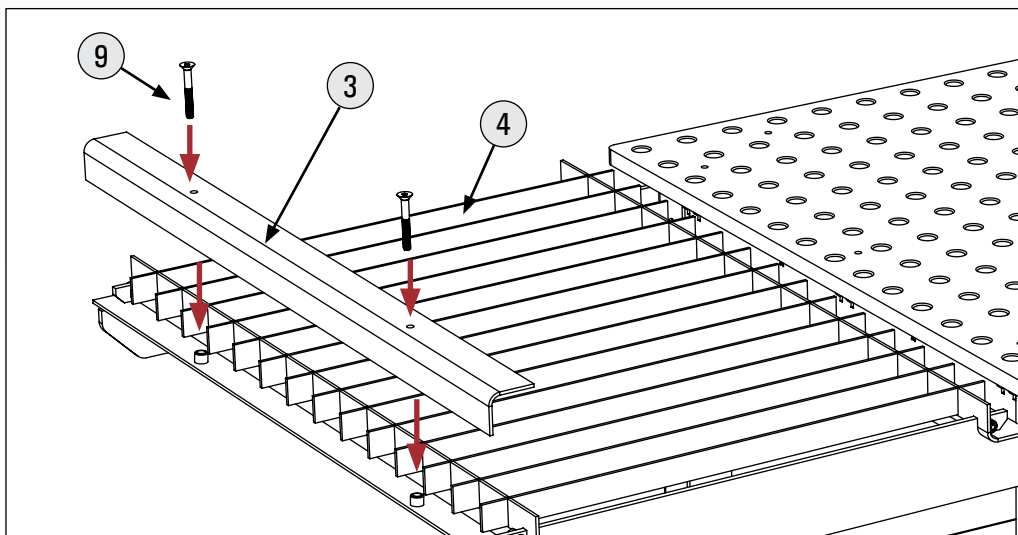
7. Once completely engaged, take a socket head screw (Part#: 10) and a nut (Part#: 11) and tightened them onto the holes on the tabs of the support arm.



8. Repeat steps 7 for the opposite end.
9. Take the washers (Part#: 12) and nest it against the insides of the adjustable handles (Part#: 7).



10. Pull up on the assembly so that it pivots 90°. While holding it, take one of the handles and pass the threaded end through the large hole of the slot on the support arm. In between the arm and the frame, place spacer (part#: 6) and pass the handles screw through them. Screw the handle into the threaded backplate and ensure that the shoulder of the handle locks into the large hole at the end of the slot.
11. Screw the other handle on the other side in the same manner.
12. Insert each of the 14 tray slats (Part#: 4) into the bottom angle bracket (Part#: 2).
13. Take the top angle bracket (Part#: 3) and secure it into place from above using two flat head screws (Part#: 9) threaded into the rivet nuts of the bottom angle bracket.



14. Repeat the last step for the opposite side.

MAINTENANCE

Keep the tray clean for optimal performance. Wipe away dust and debris from the tabletop and legs.

SAFETY

ALWAYS wear safety goggles, gloves, and other appropriate safety items for protection. Use the tray only for its intended purpose.

LIMITED WARRANTY

Each STRONG HAND TOOL® product is warranted to be free from defects in material and workmanship. Return to place of purchase for a replacement if warranty applies.